

# GeoCell

## Product Data Sheet

### Cellular Confinement System



#### Technical Specifications

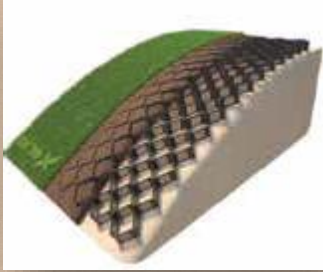
Description	Value			Test Method
Material Composition	UV Resistant Polyethylene (HDPE)			
Height / Cell depth(H) mm	75 – 100 – 150 – 200 (+/-10%)			
Welding Distance (W)/mm (+/-10%)	360	460	660	
Nominal expanded cell size /mm (+/-10%)	210*250	280*340	420*490	
Number of cells / m <sup>2</sup>	5-15			
Color	Black			
Stripe Surface Treatment	Textured surface – perforated / Non perforated			
Welding Type	Ultrasonic			
Strip thickness / mm (+/-10%)	1.2 – 1.5			ASTM D – 5199
Material density kg/m <sup>2</sup> (+/-10%)	0.95			ASTM D – 1505
Tensile strength / KN/m <sup>2</sup> (+/-10%)	12			EN ISO 103119
Seam peel strength / N (+/-10%)	1000			



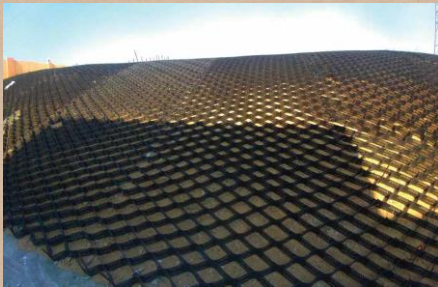
Decoland

صنعة مصر  
Made Egypt

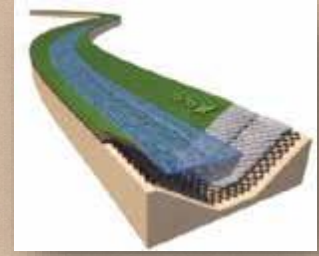
## Product Gallery



Erosion Control



Soil Stabilization & Retaining Walls



Hydraulic Structures



## Projects

